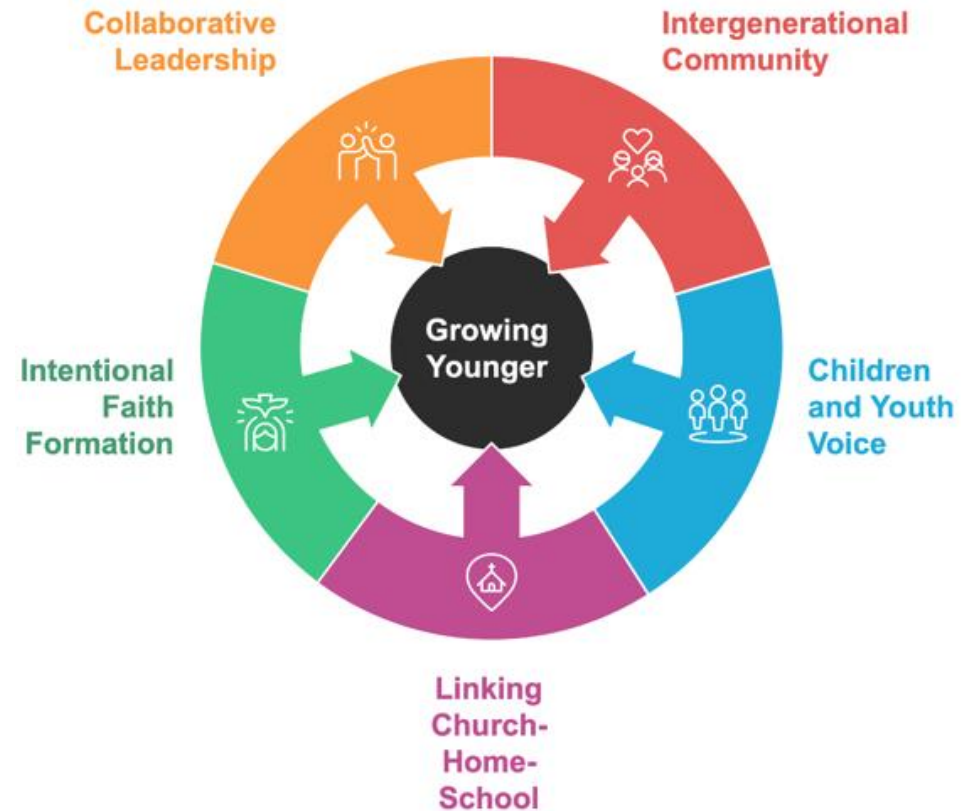


The Five Foundations in Detail

The five foundations of the Growing Younger strategy for children, youth and family ministry within the Diocese of Truro. These five foundations are based on evidence presented in *'Growing Younger: Young People, Change and Renewal in the Diocese of Truro, 2024'*.

This report drew on learning from national research, other diocesan approaches and experts in children, youth and family ministry. The missional strategy centres on a commitment to nurturing a culture of intergenerational ministry across the Diocese of Truro. It is a whole diocesan approach to engaging with children and young people, not just a project for a few people who like that sort of thing.

It is widely recognised that faith is formed within a diverse 'ecology' of people, groups and contexts. Foremost amongst these are the contexts of home, church and school, which together form the focus of this strategy. For this missional strategy to be effective, forms of collaborative ministry and partnership between church, home and school will be essential, as well as our learning from developing specific projects such as Transforming Mission and the FLOURISH pilot sites.



Intergenerational Community

- 1.1 An explicitly intergenerational approach is taken, seeking opportunities for positive and meaningful interaction across generations. Age-specific forms of children and youth ministry are valued as part of the wider process of forming intergenerational Christian communities.
- 1.2 A culture of 'intergenerationality' that is embedded and owned at all levels and is characterised by warm, affirming and consistent relationships.
- 1.3 Parents, (great) grandparents and caregivers, alongside other faith role models are valued as key figures in the faith formation of children and young people.
- 1.4 Young people are appropriately invited and supported into leadership within the Christian community.

Children and Young People's Voice

- 1.1 The presence and participation of children and young people is advocated for in the structure, culture and values of the Christian community. Underpinning this is the belief that children and young people are genuine and full participants in the Kingdom and welcoming these people is a matter of welcoming Christ himself (Luke 9:46-48).
- 1.2 There is a clear commitment to change and adapt personal preferences in order enable the full participation of children and young people in the Christian community. This includes welcoming, listening and responding to children and young people of all backgrounds and those who have little or no prior experience of Christian community, and positively thinking about those who are disadvantaged.

- 1.3 Children and young people are meaningfully equipped and supported to navigate life in society today. This will involve the Christian community offering practical and spiritual care as well as being effective signposts to specialist forms of support.
- 1.4 The missional strategy will pay specific attention to transition points that children and young people navigate, particularly as they pertain to primary and secondary education through existing school approaches to ensuring pupil voice is at the centre of decision-making and evaluation.
- 1.5 There is a clear commitment to using inclusive participation strategies that embrace diverse communication methods. This includes training staff and volunteers on neurodiversity-affirming practices to create a supportive environment where all voices are heard and valued.

Linking Church-Home-School

- 1.1 The linking of church, school and home as a local 'ecology' of faith formation should be seen as foundational to this missional strategy.
- 1.2 Integrating children and young people into worshipping communities is an essential aspect of personal faith formation.
- 1.3 Designated local church leaders should be identified to establish and maintain consistent and positive relationships with local primary and secondary schools.
- 1.4 Local church mission should be shaped primarily around the context of the families and school(s) it seeks to serve, rather than structural boundaries (such as a parish or deanery).

Intentional Faith Formation

- 1.1 The local church should openly and confidently express the aim of forming faith in Christ amongst children and young people, both within the worshipping communities of churches and schools. Faith should be seen as something that is actively received and formed rather than passively develops.
- 1.2 The formation of Christian communities, characterised by distinctively Christian language and practices, are an essential part of the children and young people's faith formation. Whilst these Christian communities may or may not 'look' like traditional forms of church, they will be publicly and distinctively Christian.
- 1.3 The creative, sensitive and faithful use of the Bible is seen a vital resource for faith formation within church, school and home.
- 1.4 Opportunities for children and young people to access county and regional Christian events and residential should be offered as part of a yearly pattern of faith exploration and growth in discipleship.
- 1.5 Local leaders should recognise and value the range of liturgical traditions represented within the Diocese of Truro. These traditions should be drawn from in contextually appropriate ways in the formation of distinctively Christian worshipping communities.

Collaborative Leadership

- 1.1 Clergy and Local Leaders should be supported in their strategic role of shaping the culture and expectations around children and youth ministry at the local level.

- 1.2 Significant resource should be put into the training, formation and ongoing professional development of all those who work with children and young people. Where relevant, expertise in the training and development of children, youth and family (CYF) ministry should be provided through strategic partnerships.
- 1.3 A diocesan CYF network should be provided to facilitate corporate theological reflection, mutual encouragement and prayer amongst children, youth and family and school leaders.
- 1.4 For focused projects and interventions, a significant period of stakeholder consultation and discernment should be undertaken to determine its suitability. Similarly, mid- and end-term reviews should be conducted to listen to participants, assess effectiveness and share learning.