

Introduction to diocesan structures

Simon Cade
Diocesan Secretary



Introduction to diocesan structures

- The “three hats” worn by synod
- What “the diocese” does
- How the BDC works
- What does the Episcopal College do?
- How does Truro Cathedral fit in?

See the more detailed information in the “Guide for Members”



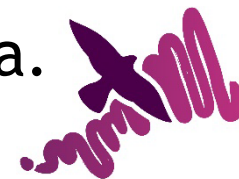
The three hats



Diocesan Synod, like many other parts of church life, operates in several areas of law.

- Church law
- Company law
- Charity law

And we usually see this reflected in the agenda.



DIOCESE
OF TRURO

What does “the diocese” do?

- It is a geographical area
- It is the specifically Church of England bits in that area
- It is the legal structure, the company & charity, the “Truro Diocesan Board of Finance Ltd” (TDBF)
- Or “them”

At diocesan synod we are here variously for all of these parts

What does TDBF do?

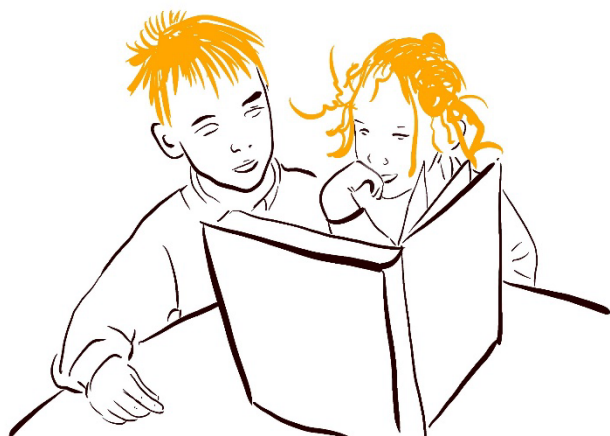
(the company and charity)

- Set up to support the ministry of the Church of England in the diocese, specifically to “organise and provide funds...”
 - for ministry including training for ministry, specifically but not only ordained stipendiary ministry
 - stipends & pensions for clergy and lay workers
 - to provide “sites” for church buildings incl clergy houses and PCC property
 - religious education including church schools
 - central diocesan organisation
 - other things....



DIOCESE
OF TRURO

What does TDBF do?



Bishops Diocesan Council

- Trustees and directors for the TDBF Ltd
- Bishops' counsel (for the whole diocese not just the TDBF)
- Statutory church functions, often on behalf of diocesan synod, including the *Standing Committee of Synod*

Much of the work is done by boards and committees, meets about five times per year, usually hybrid, for business and once in person for a full day



Episcopal College

The bishop's staff:

Bishop(s), dean, archdeacons, director of education, director of change and renewal, diocesan secretary, bishop's chaplain

- Discern God's calling for mission and ministry
- Model & shape the culture of the diocese
- Design, lead, oversee strategic plans for fruitfulness and sustainability
- Support the bishop's decision-making

Meets at least once a month for a formal meeting, and twice a week to pray



DIOCESE
OF TRURO



**Truro
Cathedral**
sacred space, common ground

The mother church of the diocese,
literally the bishop's seat for
teaching and order.

Not where the bishop lives (!)

Strategic partner of the DBF, but
not usually funded through MMF or
DBF resources

