

MINISTRY FOR A MISSIONAL CHURCH

What sort of leadership and ministry is required to enable the whole people of God to join in God's mission to his world?

This page outlines some options to stimulate our imaginations. It is a simple resource to prompt conversations.

You will also need to listen to God in prayer and think about how lay people and clergy will minister and work together.



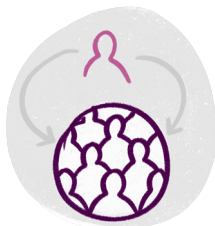
LOCAL MINISTER

A lay or ordained person who is responsible for enabling the people of God to be church in a particular place (which could be a parish, a pioneer church or a new church). They are the point of reference for the congregation and community but do not have overall responsibility for the full range of church life – that is the Oversight Minister's role. Local ministers could be Readers, Local Worship Leaders, or part-time stipendiary or self-supporting clergy.



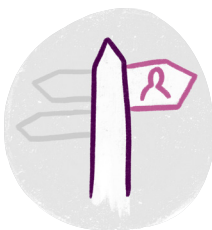
VICAR/ RECTOR

A priest with responsibility for a single or multi-parish benefice, including Resourcing churches. They can be stipendiary or self-supporting, full-time or part-time. They may work alongside assistant priests who have fewer leadership responsibilities (and who may be local ministers) as part of a team.



LAY MINISTER

Typical examples are family / youth / children's ministers. They may be either voluntary or paid. In the latter case, the employer is usually the PCC although alternatives are possible, for example, lay ministers could be employed by mission agencies or the diocese.



PIONEER MINISTER

Someone called to establish fresh expressions of church and focuses on that. Pioneer ministers can be self-supporting or stipendiary and can be lay or ordained. Deaneries may choose to invest in pioneer ministers for ministry with and among people who do not attend traditional church.



OVERSIGHT MINISTRY

The person who oversees ministry across several churches. In small deaneries, the Oversight Minister could be the Rural Dean. He or she always works with 'Local Ministers' (see above). They may be particularly connected to one church.



CHAPLAIN

A minister who provides religious and spiritual care within an organisational setting. Chaplains' work is typically beyond a traditional parish or church plant. Examples include chaplaincy in health care, education, prisons and business.



OPERATIONS MANAGER

The person who is responsible for the management and administration of the parish / cluster / deanery. Their role may be local and focus on church administration, or have significant responsibility for people, buildings and the work of the church more widely.

WHAT TO DO NEXT

The *On the Way* Advisors will help you think and pray about different models of ministry. Talk with them if you have questions or want to find out more about the practical implications. Regardless of any particular choices, deaneries will need to be clear about oversight arrangements and how all ministry is sustainable for both individuals and churches.

