

BECOMING A MISSIONAL CHURCH

WHAT SORT OF CHURCH IS GOD CALLING US TO BE?



PARISH CHURCHES

Parish churches are found in villages and towns, have small and large congregations, and worship God in many ways. Deaneries will need to consider what sort of parish churches they should have in any place not just 'what is'.

This page outlines some old and new models of church to help us imagine our answers to that question.

It is a simple resource to stimulate conversations which are underpinned by prayer and open to prophetic voices calling us into God's good future.

As you talk and pray, remember that there are lots of different ways to be church, and that the word 'church' means different things.

Unless stated otherwise, on this page we mean the 'church community' not the 'the church building'.



NEW MONASTIC COMMUNITIES

These are groups of Christians sharing a 'Rhythm of life' with a common focus. Some new monastic communities live together, others are dispersed networks of disciples. [E.g. the Diocese of Leicester's 'Tree of Life' <https://leicestertreeoflife.org/way-of-life/>]



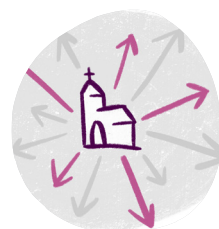
FESTIVAL CHURCHES

A church building which opens for the major festivals of Christmas and Easter plus other significant events but is otherwise open for pilgrimage and private prayer only. A way of providing ministry at especially significant moments in the life of a community.



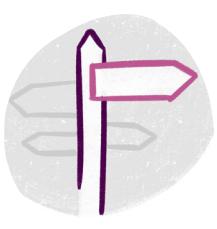
NEW CHURCHES

Planting new congregations is a great way to grow the church. They can be small or large, traditional or innovative. They often have variable worship patterns or arise from a specific service to the community. [E.g. Messy Churches which are often separate congregations]



RESOURCE CHURCHES

'Transforming Mission' aims to create 'Cornish resourcing churches' in significant population centres. One question concerns how deaneries would like this resourcing to happen on both the 'giving' and 'receiving' sides. More information at <https://trurodiocese.org.uk/resources/tm/>



PIONEER CHURCHES

We don't have to do what we have always done. 'Fresh Expressions' of church are innovative, doing church differently among people who are seeking God beyond our walls. [Eg: Carlisle Diocese's Mountain Pilgrims <https://www.mountainpilgrims.org.uk/>]



CLOSED CHURCHES

A church can decide to close as a community, and to close a building. This can be a positive step, preserving the building for the community while avoiding the ongoing burden of an unsustainable ministry. [E.g. buildings looked after by The Churches' Conservation Trust <https://www.visitchurches.org.uk/>]

WHAT TO DO NEXT

The *On the Way* Advisors will help you think and pray about different models of church. Talk with them if you have questions or want to find out more about these models or the practical implications.

Regardless of any particular choices, deaneries will need to be clear about oversight arrangements and how each church will be resourced.

